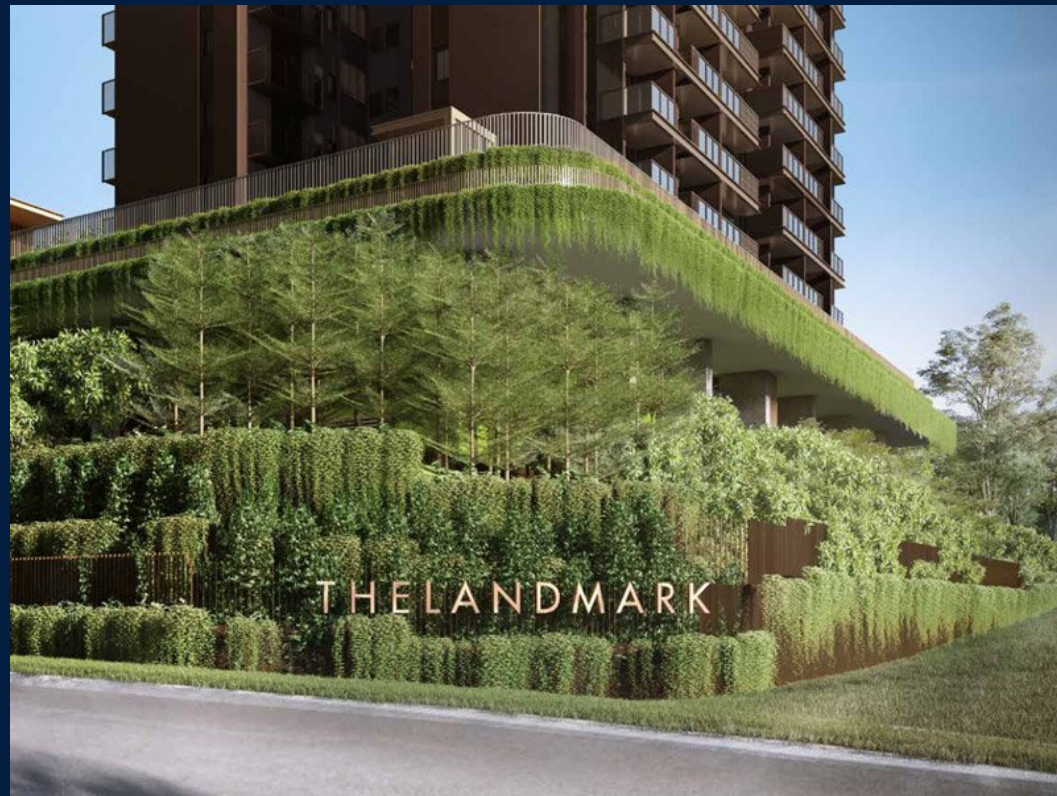


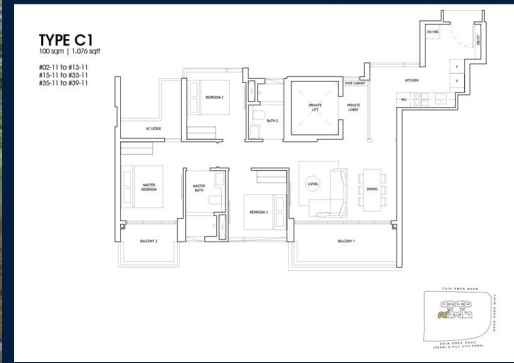
FOR SALE

RESIDENTIAL - APARTMENT
1,076SQFT (100SQM) / CALL FOR PRICE!

+65 9863 5846



3 - Bedroom Compact



RESIDENTIAL - APARTMENT

173 CHIN SWEE ROAD, ALEXANDRA,
COMMONWEALTH, SINGAPORE 169878

- LISTING ID: SGLD29922467
- TENURE: LEASEHOLD 99
- TITLE: N/A
- SIZE BUILT-UP: 1,076SQFT (100SQM)
- SIZE LAND: 1.656AC (0.670HA)
- NO. OF FLOORS: 39
- FLOOR/LEVEL: N/A - N/A
- BED ROOMS: 3
- BATH ROOMS: 2
- MAIDS ROOMS: N/A
- PARKING SPACES: N/A
- LAYOUT TYPE: OTHER
- FACING: N/A
- VIEWING: OTHER
- SELLING PRICE: **CALL FOR PRICE!**
- COMPLETION YEAR: 2025
- CONDITION: ORIGINAL CONDITION
- FURNISHING: PARTIALLY FURNISHED
- LISTING DATE: APR 21, 2021

THE LANDMARK

Apartment for Sale: Partially furnished, 3 bedroom, 2 bathroom. Completed in 2025, this unit is in original condition. Tenure: Leasehold 99 Located in Singapore's district D03 near Alexandra, Commonwealth in the area Central South (Central region).

INTERIOR FACILITIES

- Air-Conditioning
- Fiber-Internet
- Private Garden
- Balcony
- Internet Connection
- Private Lift

OTHER INTERIOR FEATURES

- Cooker Hob/Hood
- Fridge
- Dryer
- Intercom

EXTERIOR FACILITIES

- 24 Hours Security
- Covered Car Park
- Clubhouse
- Jacuzzi

VISIT THIS PROPERTY AT: <https://www.adenpang.com/property/SGLD29922467>



ADEN PANG - HUTTONS ASIA PTE LTD

3 Bishan Place #05-01 CPF Bishan Building
D20, 579838, Singapore

+65 9863 5846
WhatsApp Me

adenpcw@gmail.com

L3008899K
R000885D

<https://www.adenpang.com>



Scan QR Code

Huttons® Call for Viewing
The Agency of Choice +65-98635846